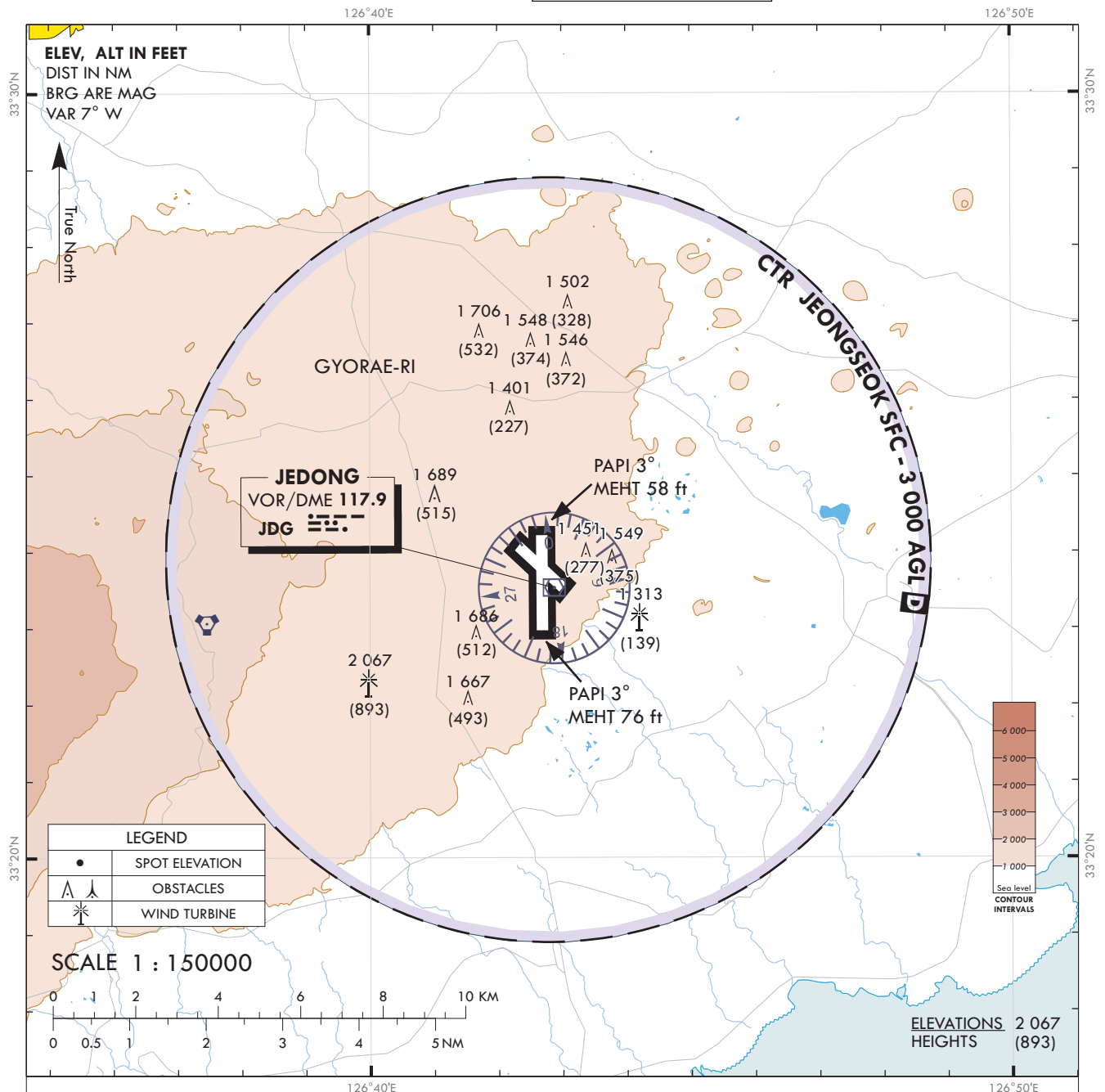


**VISUAL  
APPROACH  
CHART - ICAO**

**AERODROME ELEV 1 174 ft**  
HEIGHTS RELATED TO AD ELEV

JEJU	APP	121.2
		124.05
JEONGSEOK	TWR	124.35

**JEONGSEOK/Jeongseok**



**VISUAL APPROACH PROCEDURE**

Visual approach for flying west of aerodrome is not authorized.

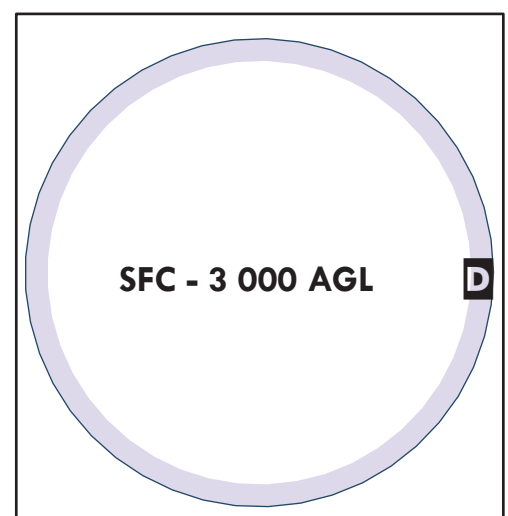
**ATS airspace Classifications**

1. Class D : Radius of Jeongseok Aerodrome ARP (332354N 1264247E)

- Vertical limits  
- Within 5 NM (SFC - 3 000 ft AGL)
- Speed limits : 250 kt IAS or less below 10 000 ft AMSL.

2. Class E :

- Vertical limits  
- Controlled Airspace from 1 000 ft above the surface or the sea level to FL 600 and less except Class A,B,C and D
- Speed limits : 250 kt IAS or less below 10 000 ft AMSL.



Change : Information of visual approach procedure and ATS airspace classifications.